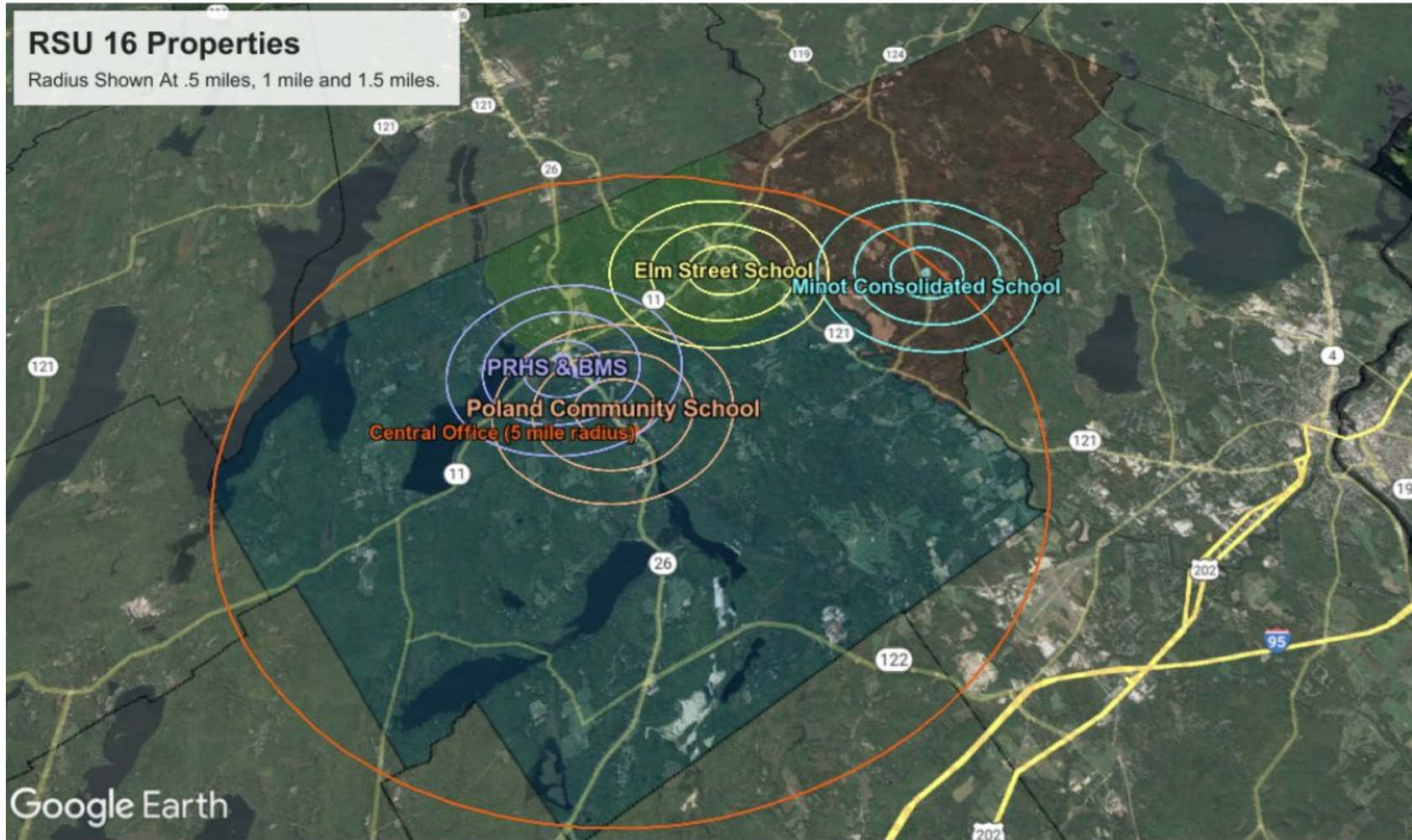


Boiler Room



RSU 16 Properties

Radius Shown At .5 miles, 1 mile and 1.5 miles.



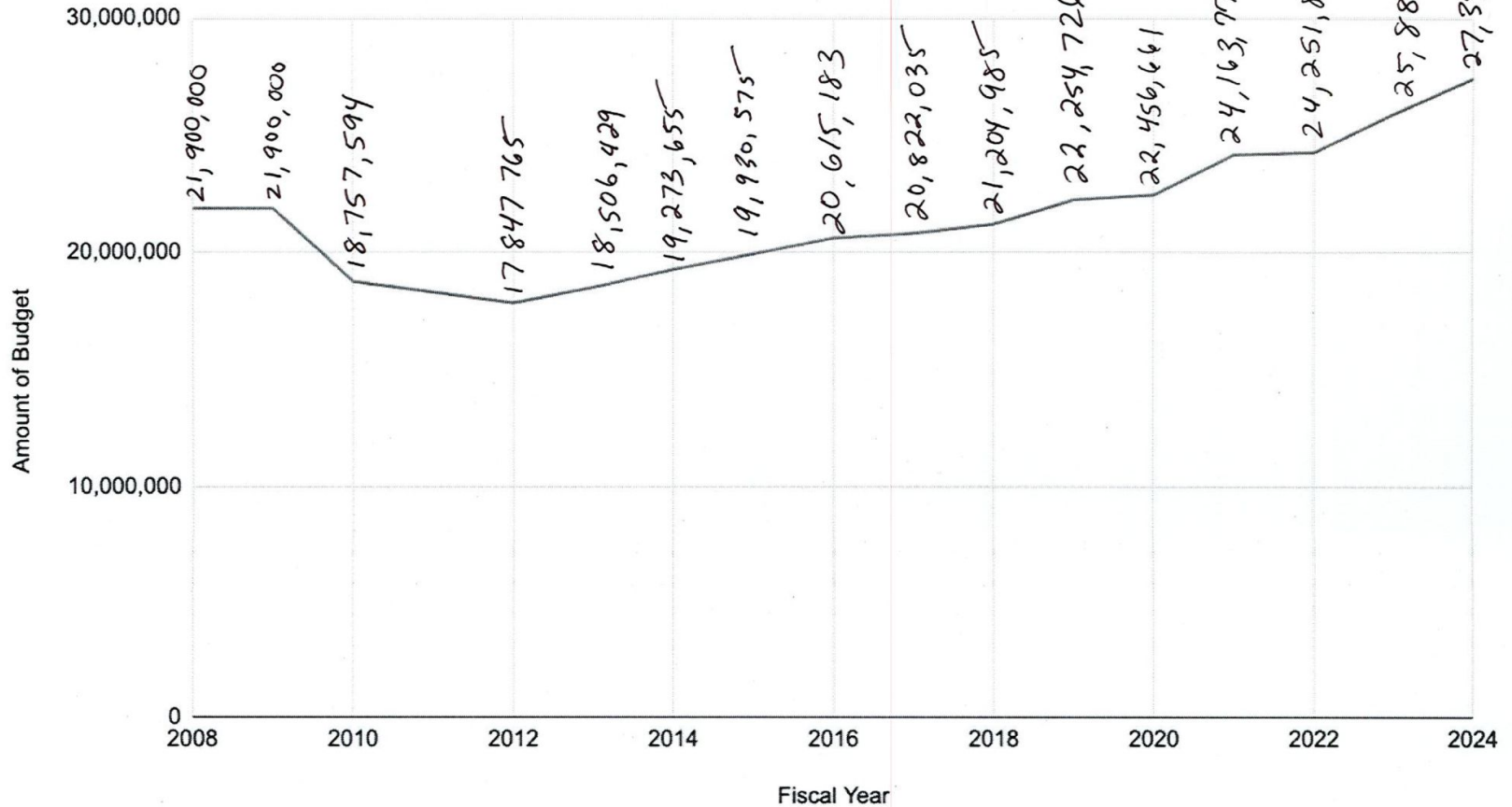
	Elm Street School			Poland Community School			Minot Consolidated School		
	Grade Level Total	Budgeted # Teachers	Class size	Grade Level Total	Budgeted # Teachers	Class size	Grade Level Total	Budgeted # Teachers	Class size
Kindergarten	36	3	12	51	3	17	27	2	14
1st grade	24	2	12	55	3	18	22	2	11
2nd grade	32	2	16	58	3	19	35	2	18
3rd grade	31	2	16	52	3	17	28	2	14
4th grade	26	2	13	67	4	17	31	2	16
5th grade	29	2	15	55	3	18	27	2	14
6th grade	39	2	20	66	4	17	32	2	16

14.85714

15

888

Amount of Budget vs. Fiscal Year



Costs to rehabilitate or “catch-up” on deferred maintenance and maintain pace for predictive maintenance (*does NOT include yearly budgeted operating costs and current/future*):

Elm Street School: \$3,353,250 (DOES NOT include heating)

Minot Consolidated School: \$1,826,700 (DOES NOT include heating)

Poland Community School: \$3,152,250 (DOES NOT include heating)

Elementary Schools Total: \$8,332,200 (DOES NOT include heating)

Whittier Middle School/Poland Regional High School: \$1,901,250

Central Office: \$246,750

WMS/PRHS/CO Total: \$2,148,00

TOTAL: \$10,480,200 (DOES NOT include heating)

With previously proposed EMC heating cost estimate (\$5,000,000):

New TOTAL to rehabilitate or “catch-up” on overdue maintenance and maintain pace for predictive maintenance (does NOT include yearly budgeted operating costs and current/future: \$15,480,200

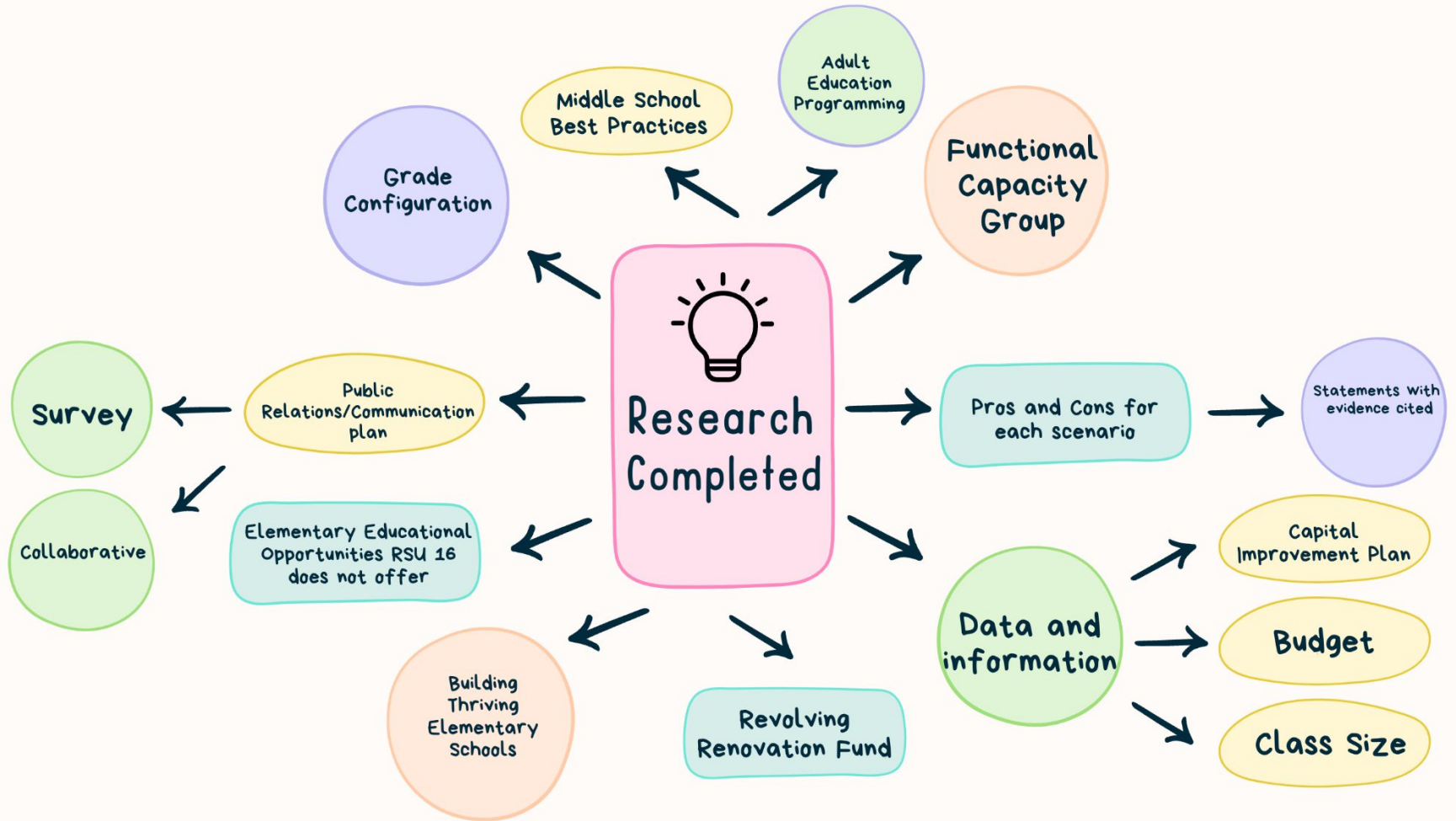
Staff them

Continue to pay negotiated salaries and benefits (approximately \$1,000,000 increase each year)

Support schools to grow programs to meet student needs and curriculum needs: \$400,000 each year (three new staff a year, plus programming/curriculum costs) Additional \$1,400,000 each year (this does not include yearly increases in operating costs)

Futures Task Force

Central Office	Todd Sanders (Superintendent) Amy Hediger (Assistant Superintendent) John Hawley (Director of Operations)
RSU 16 Administrators	Erik Anderson (PRHS Principal) Shawn Vincent (WMS Principal) Jessica Madsen (ESS Principal) Kaitlynn Brown (MCS Principal) Brandi Comeau (PCS Principal) Jenny Rose (Adult Education Director) Jo St Peter (Special Education Director)
RSU 16 Staff	Jacque Russo (PreK-6) Jennifer Gagnon (7-8) D'Arcy Robinson (9-12)
RSU 16 School Board	Angela Swenson (Minot) Elizabeth Martin (Minot) Emily Rinchich (Poland) Mary Martin (Mechanic Falls)
Community Members	Randy Lautz (Poland) Terri Arsenault (Mechanic Falls) Robert Klar (Minot)
Town Officials	Steve Robinson (Poland) Brittany Hemond (Minot) Tarsha Downing (Mechanic Falls)



Scenario 1	Keep 3 hometown elementary schools - fund them, staff them and fix them
Scenario 2	Reduce the number of PreK-6 elementary schools to 2: Combine ESS and MCS, keep PCS as is
Scenario 3	Reduce the number of PreK-6 elementary schools to 2 AND reconfigure (example: PreK-2 school and 3-5/6 school)
Scenario 4	Keep 3 elementary schools - fund them, staff them and fix them AND reconfigure (example: PreK-1 school, 2-3 school and 4-5/6 school)
Scenario 5	Keep all three elementary buildings (fund them, fix them, staff them), keep PCS as is, reconfigure MCS and EES into grade spans.



SAFE AND HEALTHY
LEARNING
ENVIRONMENTS
"FIX THEM"



SUSTAIN AND GROW
EDUCATIONAL
OPPORTUNITIES
"STAFF THEM"



EDUCATION PATHWAYS

All Day PreK, Elementary Level
Alternative Education Pathway,
Bridge to LRTC, Internships,
High School mentors,
Evening classes, AP Courses,
Inclusion

PRACTICAL LEARNING

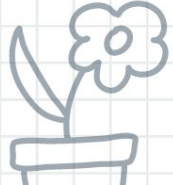
Outdoor Learning, Gardening,
Cooking, After school tutoring,
Community Partnerships,

SKILL DEVELOPMENT

Typing, Career Exploration,
Agriculture Based Education,
Life Skills, Home
Economics/Consumer Science,
Adulting

BRAIN STORM

EDUCATIONAL
OPPORTUNITIES THAT RSU 16
DOES NOT OFFER OR WOULD
LIKE TO ENHANCE



EXPANDED ARTS

Chorus and Band, Theatre
and Dance, Robotics, Fine Art
Electives

ACADEMIC SUBJECTS

US History, Foreign Language,
STEM, Technology, Coding,
Computer science, Civics



ENGAGEMENT AND SUPPORT

Drivers Ed, Late Bus,
Community Partnerships,
Volunteers, Drone, Robots,
Peer Mentors,

